



— led lighting



STARTS A NEW ERA OF LIGHTING,
FULL OF NEW CONCEPTS FOR LIGHTS FOREVER...

Ultimate range in
LED lighting

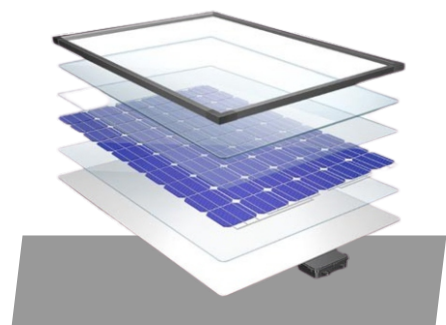
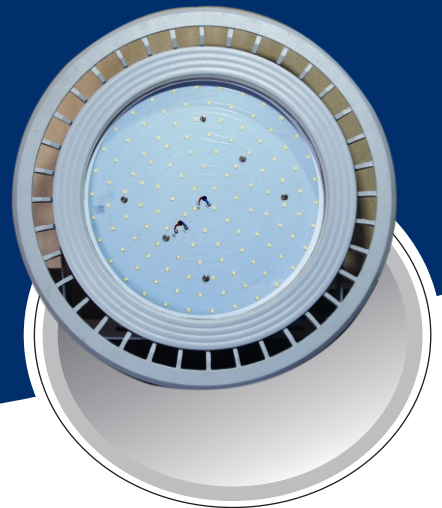
making the
WORLD BRIGHTER



WELCOME TO RADHEY MOHAN SOLAR SYSTEM

Krishna Power System is a Delhi based MNRE Approved and ISO Certified manufacturer of high quality, engineered systems that include solar LED Street lights, LED Flood Lights, LED based products and solar-electric power generation systems which are free from the utility grid. We also manufacture a solar powered light system that ties into the utility grid. Our systems are engineered for long-term and reliable performance with little or no maintenance. The systems are designed for a wide range of physical and operating environments and are perfect for rural, suburban and metropolitan areas.

Voltaic Power brings a large amount of services to the table with only two objectives in mind: to supply you with whatever resource possible to win the project, and to provide a service and product that is unparalleled. We strive to exceed your expectations and with so many benefits to being our partner, we will set the new standard of what you will expect from a lighting manufacturer.



Semi integrated Solar Street Light System (Two in One)



Technical Specifications : Two in One Solar Street Light System

Description	9W LED	12 W LED	15 W LED	18W LED	24W LED
Voltage	12V	12V	12V	12V	12V
Solar Module	40 Wp	60 Wp	75 Wp	100 Wp	120 Wp
LED Light	9WLED	12WLED	15W LED	18W LED	24W LED
Battery Capacity	12.8V/ 11.1V 18Ah/ 13.4 Ah LiPo4/Lithium-ion Battery				
Motion Sensor	PIR Motion Sensor (10 Range)				
Lumen Output /Watt	120 Lumen/W				
Operation	Light will glow in full Bright mode for first 4 hours, Light will Dim to 33% Power and motion Sensor will. Activate for detection of motion. If a motion is detected in 10M area around the Light It will glow in full mode for 2 minutes, After That it again come to 33% Power.				
LED Driver Efficiency	>93.5%				
LED Light Operating Voltage Range	11-16V				
Load Cutt-Off Voltage For Battery Deep Discharge Protection	11.2 Volt				
Space Between Pole	10mtr to 15mtr				
Pole	G.I. Galvanized (5m+1m)				
Light Backup Time	Full Night				
Net Weight	3kg Approx				
Product Dimension (LxLxWx)	420x210x90 (mm)				
Over Charge Protection	Provided				
Protection Load open & short	Provided				
Deep Discharge protection/Battery reverse Protection	Provided				
Load open & short Protection	Provided				
Indication on Charging	Green LED Glow				
Indication on Battery Low	Red LED Glow				
Indication on Higher Cat Off Reverse Current Flow Protection Temperature Compensation	Green LED Blinking Provided Provided				
Packaging Contents	Integrated Light with Nut-Bolt				
Product Warranty Note :	2 Year Warranty Complete System (Battery Warranty 5 Year/**)				

Note : Also available on demand model 65W.


Extra Features street light with camera, remote control, GPS system control, WiFi.

** More than 2 Years warranty on customers demand.

* Pic & Spec can be changed without prior notice.



Technical Specifications : Solar Street Light System

	Description	7W LED	9W LED	12W LED	18W LED	24W LED	30W LED	43W LED	56W LED
	Voltage	12V	12V	12V	12V	12V	12V	12V	24V
	Charger Type	PWM	PWM	PWM	PWM	PWM	PWM	MPPT	MPPT
	Solar Module	40 Wp	40 Wp	75 Wp	100 Wp	120 Wp	150 Wp	250 Wp	2x200 Wp
	Cell	High efficiency Multi Crystalline silicon cells / Mono Crystalline silicon cells							
	Rigidity	Designed to with stand tough environment conditions							
	Battery & Battery Box								
	Battery Capacity @ C/10	40 Ah	40 Ah	75 Ah	100 Ah	120 Ah	150 Ah	200 Ah	2x100 Ah
	Charging Efficiency	< 96%							
	Self Discharge	< 2% per month at 27°C							
	Battery Box Casing	100% Acid Proof / Polymer Battery Box / GI Metal Box							
	LED Luminiare								
	Driver Efficiency	90%	91.6%	90.8%	90.2%	90.2%	93.1%	94.2%	94.2%
	World Class LEDs	from Japan/Germany							
	Lumen Efficiency / Watt	> 120 Lumen/w							
	Rated Lamp Life (Avg.) hrs	More than 50,000 hrs							
	IP Class	IP 65							
	Humidity	95%							
	Power Factor	01							
	Operating Temperature	-15°C to + 80°C							
	Dimmer	Programmable (Micro-Controller Based) / Optional							
	Autonomy	3 Days							
	Pole & Material Used	(4m + 1m) G.I. Galvanized MS							
	Protection	Open Circuit, Short Circuit Protection for Lamp, Over Charge & Deep Discharge Over load, Reverse polarity, Reverse Flow							
	Indicators	Green Charging, Red Low Battery							
	Product Warranty	2 Years Warranty complete System / **							



Note : Also available on demand model 65W.

Extra Features street light with camera, remote control, GPS system control, WiFi.

** More than 2 Years warranty on customers demand.

* Pic & Spec can be changed without prior notice.



(Normal)
15 to 30 watt



(Frame Type)
25 to 80 watt



(Frame Type L)
50 to 200 watt

Technical Specifications : AC LED Street Light

Model	REI-15	REI-24	REI-30	REI-36	REI-45	REI-50	REI-60	REI-80	REI-100	REI-120	REI-200
Power Consumption	15 Watt	24 Watt	30 Watt	36Watt	45Watt	50 Watt	60 Watt	80 Watt	100 Watt	120 Watt	200 Watt
LDR or Dusk to Dawn	Optional										
Nominal Voltage (V)	120-270V AC, 50Hz										
Power Factor	≥.985@240v										
Control Gear	In-built electronic driver with APFC & THD≤10% Output Short-Circuit, Over Voltage, Surge & Phase to Phase Protection										
LED Color Temperature	5700K-6500K										
Beam Angle	120° LED Beam Angle				120° LED Beam Angle				120° LED Beam Angle		
Optical Cover	High Efficiency Toughened Glass Cover for Extra Protection										
Lumens Output	≥110 Lumen / W										
Housing Material	Aluminum Pressure Die Cast ADC 12 Housing (Heat Sink) for better heat transmission										
Dimension	380mm X 140mm				380mm X 170mm				450mm X 210mm	470mm X 235mm	
Weight	1.5 Kg.				2.2 Kg.				2.2 Kg.	2.950 Kg.	
Protection Rating	IP 65										
Mounting & Maintenance	Suitable for side entry mounting with bracket arm ID Ø34mm (max).				Suitable for side entry mounting with bracket arm ID Ø45mm (max).				Suitable for side entry mounting with bracket arm ID Ø54mm (max).		
Product Warranty	2 Year / **										

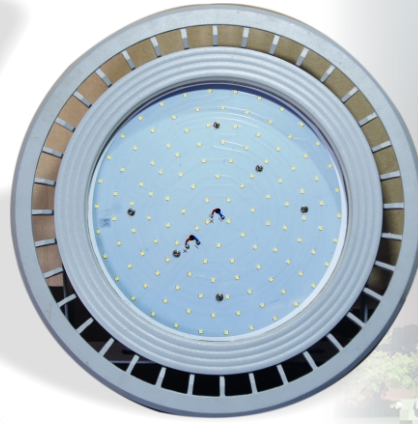
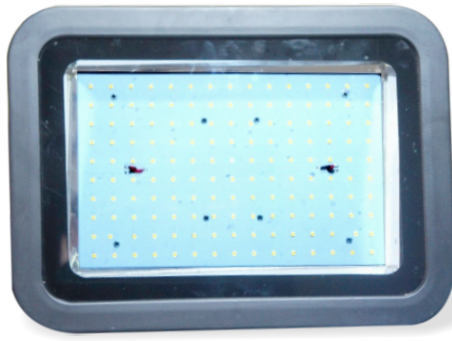
Note : Also available on demand model 150W, 200W.

Extra Features street light with camera, remote control, GPS system control, WiFi.

** More than 2 Years warranty on customers demand.

* Pic & Spec can be changed without prior notice.





Technical Specifications : AC LED Flood Light

Model	REI-30	REI-50	REI-80	REI-100	REI-120	REI-200	REI-250	REI-300
Power Consumption	30 Watt	50 Watt	80 Watt	100 Watt	120 Watt	200 Watt	250Watt	300 Watt
LDR or Dusk to Dawn	Optional							
Nominal Voltage (V)	90-310V AC, 50Hz							
Power Factor	≥.985@240v							
Control Gear	In-built electronic driver with APFC & THD≤10% Output Short-Circuit, Over Voltage, Surge & Phase to Phase Protection							
LED Color Temperature	5700K-6500K							
Beam Angle	120° LED Beam Angle			120° LED Beam Angle			120° LED Beam Angle	
Optical Cover	High Efficiency Toughened Glass Cover for Extra Protection							
Lumens Output	≥ 130 Lumen / W							
Housing Material	Aluminum Pressure Die Cast ADC 12 Housing (Heat Sink) for better heat transmission							
Dimension	380mm X 140mm			380mm X 170mm			450mm X 210mm	470mm X 235mm
Weight	1.5 Kg.			3.2 Kg.			5.2 Kg.	7.750 Kg.
Protection Rating	IP 65							
Mounting & Maintenance	Suitable for side entry mounting with bracket arm ID Ø34mm (max).			Suitable for side entry mounting with bracket arm ID Ø45mm (max).			Suitable for side entry mounting with bracket arm ID Ø54mm (max).	
Product Warranty	2 Year / **							

Note : Also available on demand model 300W.

Extra Features street light with camera, remote control, GPS system control, WiFi.

** More than 2 Years warranty on customers demand.

* Pic & Spec can be changed without prior notice.



Technical Specifications : Solar Charger Controller

Type	REI-CC05	REI-CC08	REI-CC10	REI-CC15	REI-CC20	REI-CC40
System Voltage	12 V			12/24 V Auto Recognition		
Max. Charge / Load Current	5 A	8 A	10 A	15 A	20 A	40 A
Efficiency	97.2%	97.8%	98%			98.1%
Float Charge	13.7 V			27.4 V		
Boost Charge	14.4 V			28.8 V		
Equalization	14.8 V			29.6 V		
Charging Method	3 - step (on Demand)					
Reconnect Level	12.8 V			25.6 V		
Over Voltage Protection	14.8 V			29.6 V		
Under Voltage Protection	11.2 V			22.4 V		
Max. Panel Voltage	22 V in 12 V system			44 V in 24 V system		
Temperature Compensation	-2 to -3 mV / °C / Cell					
Max. Own Compensation	< 4 mA		< 15 mA		< 20 mA	
Function Indication Type	LED type / Digital Meter (LCD) / Analog Meter / Seven Segment Display Meter					
Grounding	-ve grounding possible					
Ambient Temperature	-15°C to + 80°C					
Max. Height	4000 m above sea level					
Battery Type	Lead acid (GEL, AGM, Flooded), Li-ion (Optional)					
Weight	200 gm			900 gm		
Dimension (LxBxH)	10.5 x 14.5 x 4 (cm)			18 x 18 x 8 (cm)		
Type of Protection	IP 21					
Fuse	Electronic Fuse Provided					
Mobile charger (Optional)	Plug in Socket (on Demand)					
Mounting type	Suitable for wall Mounting					
Product Warranty	1 Year / **					

Note : Also available running model 36V/30A | 48V/40A-50A | 72V/50A | 96V/40A-50A-60A | 120V/50A-60A | 144V/50A-60A | 180V/50A-60A | 196V/50A-60A | 360V/80A.
Extra Features CC with GPS system control, WiFi.

** More than 1 Years warranty on customers demand.

* Pic & Spec can be changed without prior notice.

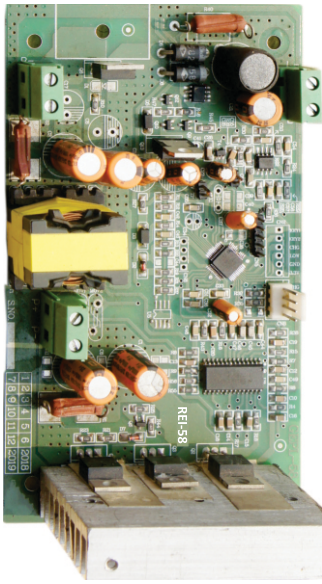


Technical Specifications : Solar Photovoltaic Modules

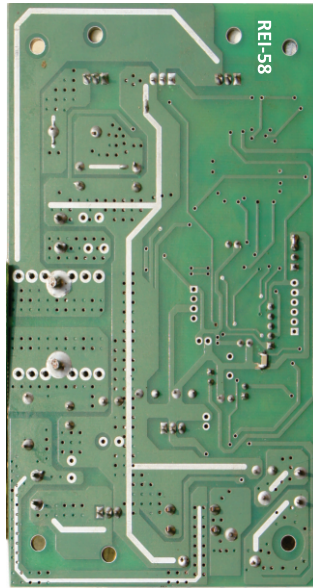
Electrical Characteristics	REI-10Wp	REI-20Wp	REI-40Wp	REI-50Wp	REI-60Wp	REI-75Wp	REI-100Wp	REI-125Wp	REI-150Wp
Peak Power (WP)	10	20	40	50	60	75	100	125	150
Open Circuit Voltage Voc (V)	21.60								
Short Circuit Current Isc (A)	.78	1.28	2.41	3.06	3.54	4.59	6.22	7.45	8.72
Voltage at maximum Power (Vmp) (A)	17.54	18	18	18	18	18	18	18	18
Current at maximum Power (Imp) (A)	.68	1.15	2.24	2.82	3.35	4.21	5.75	6.95	8.35
Maximum System Voltage (V)	600								
Physical Parameters									
Solar Cell per Module (Units)	on demand								
Solar Cell Type (MC)	Multi								
Solar Cell Per Module (Units)	36								
Arrangement of Cell (L*B) (nos.)	9*4								
Weight (Kg)	1.200	2.200	3.700	4.320	4.90	6.580	8.300	9.70	11.10
Hole to hole dimension (mm) (CTC)	X=315 Y=145	X=315 Y=260	X=645 Y=212	X=645 Y=267	X=645 Y=297	X=645 Y=386	X=630 Y=505	X=630 Y=627	X=630 Y=742
Module Size LxWxH (mm)	340x295x22	525x340x22	660x425x38	660x535x38	660x595x38	773x660x38	1010x665x35	1255x665x35	1485x665x35
Measurement Tolerance on power	+/-3%. All electrical parameters specified at: STC: 25°C cell temperature; 1000W/m2 Irradiance								
Other Characteristics									
Type of Cell	Multi Crystalline Silicon								
Front Face	Tempered Glass (Low Iron), 3.2mm								
Encapsulate	Ethylene Vinyl Acetate (PID)								
Frame	=17μ Anodize Thickness Aluminium Frame with Twin Profile								
Junction Box	IP 65/67, 3 Terminal, 2 Diodes								
Temp. Coefficients of Pmax (%/°C)	-0.45								
Temp. Coefficients of Voc (%/°C)	-0.35								
Temp. Coefficients of Lsc (%/°C)	0.05								

* Pic & Spec can be changed without prior notice.

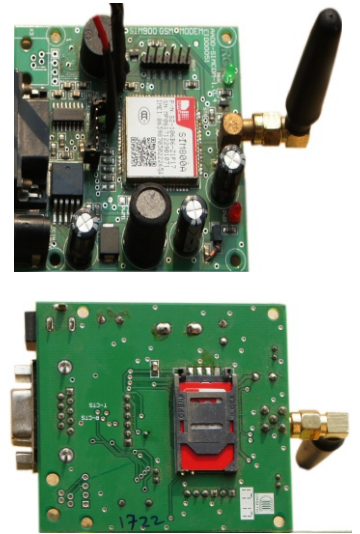
REI-58 Front



REI-58 Back

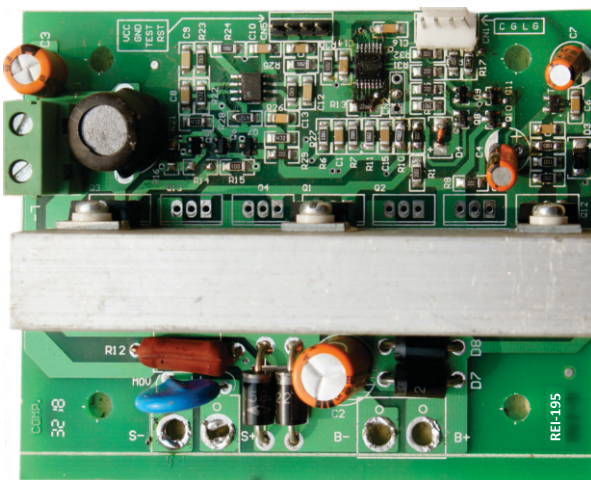


REI-58 Front

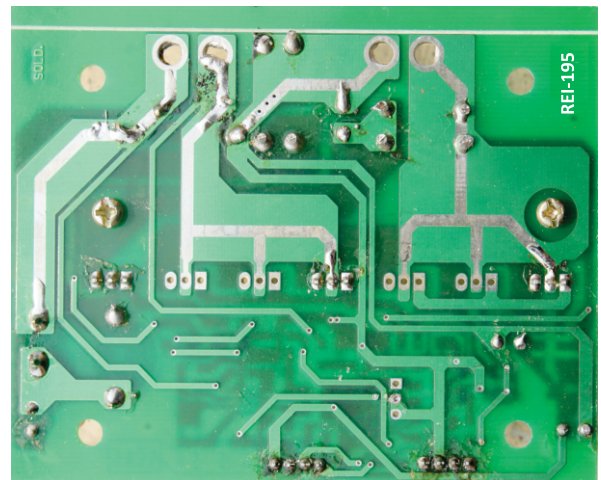


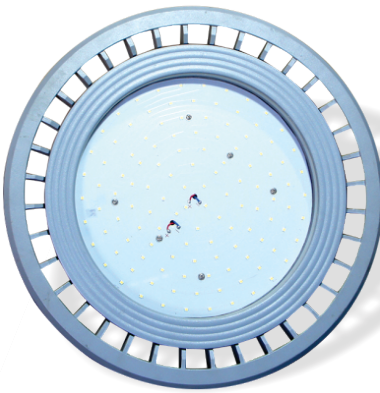
REI-58 Back

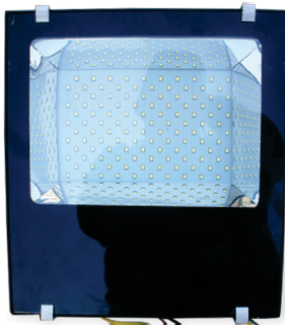
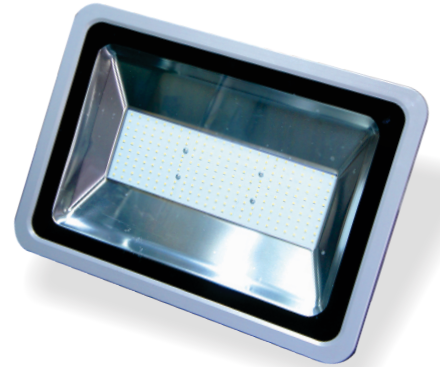
REI-195 Front



REI-195 Back



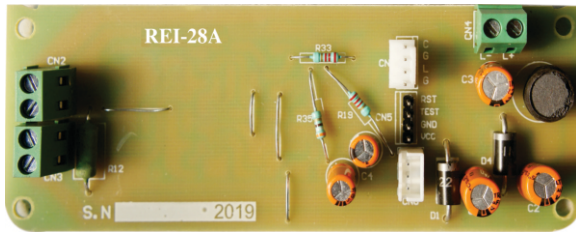




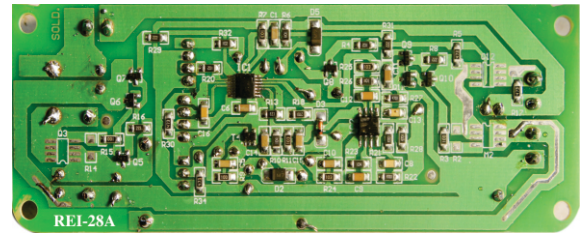
I don't
want a **PERFECT** Life
I want a **HAPPY** Life



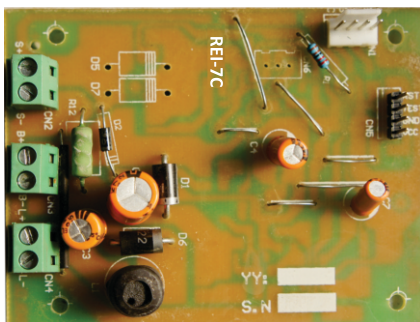
REI-28A Front



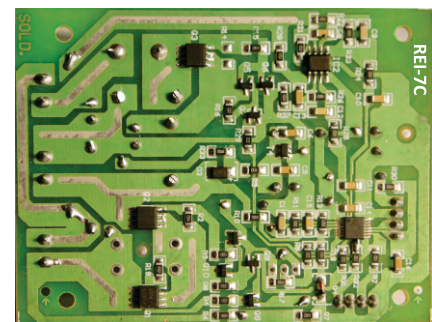
REI-28A Back



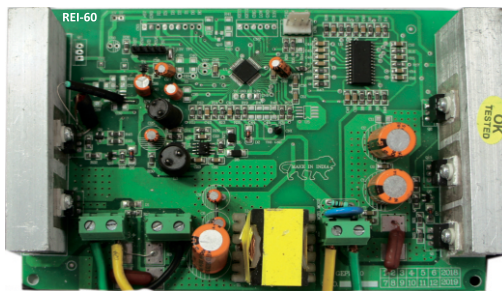
REI-7C Front



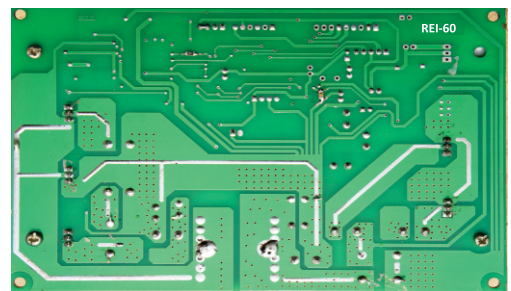
REI-7C Back



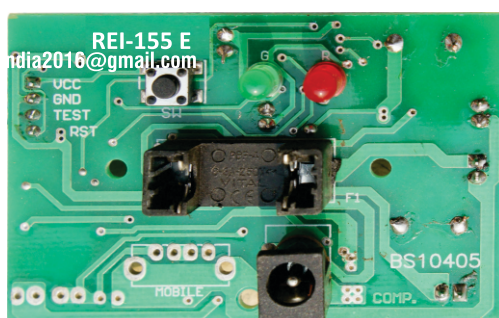
REI-60 Front



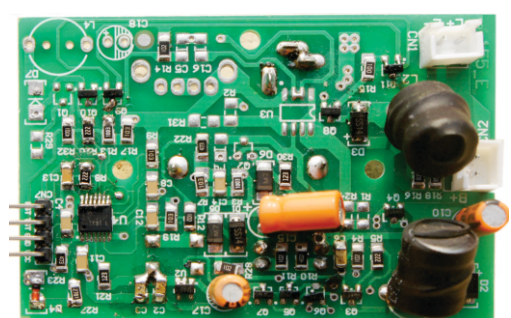
REI-60 Back



REI-155 E Front



REI-155 E Back





Technical Specifications : Solar Photovoltaic Modules

Electrical Characteristics	REI-300Wp	REI-305Wp	REI-310Wp	REI-315Wp	REI-320Wp	REI-330Wp	REI-340Wp	REI-350Wp
Peak Power (WP)	300	305	310	315	320	330	340	350
Open Circuit Voltage Voc (V)	45.36	45.38	45.67	46.04	46.12	46.42	47.26	47.44
Short Circuit Current Isc (A)	8.64	8.68	8.76	8.89	8.98	9.40	9.81	9.85
Voltage at maximum Power (Vmp) (A)	37.66	37.43	37.54	37.78	37.82	37.85	37.89	37.93
Current at maximum Power (Imp) (A)	7.89	8.50	8.26	8.34	8.47	8.72	9.04	9.24
Hole to hole dimension (mm) (CTC)	X = 940 Y = 980							
Module size LxWxH (mm)	1960 x 982 x 35							
Solar Cell per Module (Units)	72							
Solar Cell Type (MC)	Multi					Mono		
Maximum System Voltage (V)	1000 (TUV)							
Arrangement of Cell (L*B) (nos.)	12 x 6							
Weight (Kg)	21.8							
Junction Box (IP67)	4 Terminal with 3 bypass diodes (20A)							
Tolerance of electrical parameters	± 3%, Pm Positive Tolerance					Guarantee & Certifications : Product Warranty : 25 Yrs.		
Temperature Coefficients						Performance Guaranteed Power: Output of 90%		
Coefficients of currents a (% °C)	0.05 ± 0.02					for 10 Yrs. & 80% for 25 Yrs.		
Coefficients of currents b (% °C)	-0.35 ± 0.01					N/A		
Coefficients of currents c (% °C)	-0.44 ± 0.02					N/A		
Maximum System Voltage (V)	1000 (TUV)					Packing Information: Quantity/Pallet 2 in 1		
Temperature Range	-40°C to +85°C							
Efficiency Reduction at 200wm2, 25°C	< 5%							
Standard Test Condition (STC)	Irradiance 1000Wm ² , Temperature 25°C, AM 1.5							
Mechanical Specification								
Cable & Connections	4mm2, TUV Certified, 1000mm (Optional)							
Application Class	Class A (Safety Class)							
Front Cover	High Transmission, Low Iron, Tempered Glass							
Cell In capsule	Ethylene Vinyl Acetate (PID)							
Back Cover	Composite Film							
Frame	= 17μ Anodize Thickness Aluminium Frame with Twin Profile							

* Pic & Spec can be changed without prior notice.



Technical Specifications : Lanterns & Study Lamps

Type	Lantern Cool	Lantern Zoya	Study Lamp	
Lamp Wattage	3W	3W	1W	0.5W
Solar Panel (Wp)	3 Wp	3 Wp	2 Wp	1 Wp
Battery	6 V, 4.5 Ah	6 V, 4.5 Ah	Li-ion 3.7V / 2200 mAh	Li-ion 3.7V / 1500 mAh
Backup	6 to 8 hrs		8 to 10 hrs	8 to 10 hrs
Lumens/Watt	110			
Idle Current	< 1mA	< 1mA	< 1mA	< 1mA
Efficiency	> 91%	> 91%	> 89%	
Light Mode	2 (Hi/Low)	2 (Hi/Med/Low)	2 (Hi/Low)	2 (Hi/Low)
Autonomy	Min 2 Days	Min 2 Days	Min 1 Days	Min 1 Days
Protection	No Load Protection Battery Overcharge & Deep Discharge Protection Short Circuit Protection Battery Reverse Polarity / Reverse Flow Protection			
Frame	Strong ABS Plastic	Strong ABS Plastic	Strong ABS Plastic	Strong ABS Plastic
Application	Studying & Home			
Product Warranty	1 Year warranty complete system (Battery warranty 180 days) / **			

** More than 1 year warranty on customers demand






Technical Specifications : SAUBHAGYA MPPT CHARGE CONTROLLER

Description	
Solar Panel	200Wp Solar Panel Polycrystalline
LED Light	7*5W LED
Battery Capacity	12.8V 80AH Lifepo4 Battery
Lumen Output \Watt	130-160 Lumen/Wp
LED Driver Efficiency	> 93.5%
LED Light Operating Voltage Range	10-16V
Load Cutt-Off Voltage for Battery	11.2V \pm .2V
Deep Discharge Protection	Provided
Product Warranty	2 Years Warranty complete System (Battery warranty 5 Year).
Light Backup Time	5 Hours per Day
Net Weight	NA Kg Approx
Product Dimension (L*W*H)	NA
Over Charge Protection	Provided (14.8V)
Deep discharge protection	Provided
Load open & short protection	Provided
Indication on Charging	Green LED Glow
Indication on Battery Low	Red LED Glow
Indication on Higher Cutt Off	Green LED Blinking
Reverse Current Flow protection	Provided
Temperature Compensation	Provided
Battery reverse Protection	Provided



Technical Specifications : Solar High Mast Lights

Description	72W LED	96W LED	120W LED	144W LED
LED Luminaire Type	4X18W LED	4X24W LED	4X30W LED	4X36W LED
Solar PV Module (Power)	4X100 Wp	4X125 Wp	4X200 Wp	4X225 Wp
Battery Capacity @ C/10	4X75 AH	4X100 AH	4X120 AH	4X150 AH
Pole	G.I. Galvanized MS (7meter)		G.I. Galvanized MS (7meter + 1 meter)	
Voltage	12V			
Charging Type	PWM			
Cell	High efficiency Multi Crystalline silicon cells			
Rigidity	Designed to with stand tough environment conditions			
Battery Box	100% Acid Proof / Polymer Battery Box / Metal Box			
Charging Efficiency	< 96%			
Self Discharge	< 2% per month at 27°C			
LED Luminiare				
Driver Efficiency	92%			
World Class LEDs	from Japan/Germany			
Lumen Efficiency / Watt	> 120 Lumen/w			
Rated Lamp Life (Avg.) hrs	More than 50,000 hrs			
IP Class	IP 65/67			
Humidity	95%			
Power Factor	01			
Operating Temperature	-15°C to + 80°C			
Dimmer	Programmable (Micro-Controller Based)			
Autonomy	3 Days			
Protection	Open Circuit, Short Circuit Protection for Lamp, Over Charge & Deep Discharge Over load, Reverse polarity, Reverse Flow			
Indicators	Green Charging, Red Low Battery			
Product Warranty	2 Years Warranty complete System / **			



Note : Also available on demand model 50W.

Extra Features street light with camera, remote control, GPS system control, WiFi.

** More than 2 Years warranty on customers demand.

* Pic & Spec can be changed without prior notice.



Technical Specifications : Solar LED Street Light Luminaire

Description	7W LED	9W LED	12W LED	18W LED	24W LED	30W LED	43W LED	56W LED
Voltage	12V	12V	12V	12V	12V	12V	12V	24V
Solar Module	40 Wp	40 Wp	75 Wp	100 Wp	120 Wp	150 Wp	250 Wp	2x200 Wp
Battery Capacity @ C/10	40 Ah	40 Ah	75 Ah	100 Ah	120 Ah	150 Ah	150 Ah	2x100 Ah
Charger Type	PWM	PWM	PWM	PWM	PWM	PWM	PWM	MPPT
Driver Efficiency	90%	91.6%	90.8%	90.2%	90.2%	93.1%	94.2%	94.2%
Charging Efficiency	< 96%							
Idle Current	< 10 mA							
LED Color Temperature	5700K to 6500K							
Lumen Efficiency / Watt	> 120 Lumen / W							
Rated Lamp Life (Avg.) hrs	More than 50,000 hrs							
World Class LEDs / Make	from Japan, Germany / Osram, Edition LED							
Beam Angle	120° LED Beam Angle							
Power Factor	01							
Humidity	95%							
Indicators	Green Charging, Red Low Battery							
Protection	Open Circuit, Short Circuit Protection for Lamp, Over Charge & Deep Discharge Over load, Reverse polarity, Reverse Flow							
Dusk to Down (Automatic - on/off)	Provided							
Operating Temperature	-15°C to + 80°C							
Dimmer	Programmable (Micro-Controller Based) / Optional							
Weight (kg)	1.5 (approx)						2.1 (approx)	
Rigidity	Designed to with stand tough environment conditions							
Dimension	380 x 140 (mm)						380 x 170 (mm)	
Mounting & Maintenance	@ Suitable for side entry mounting with bracket arm {ID Ø38mm (max).}						@ {ID Ø50mm (max).}	
IP Class	IP 65							
Product Warranty	2 Years / **							

Note : Also available on demand model 60W, 72W, 80W, 100W.

* Pic & Spec can be changed without prior notice.

Extra Features street light with camera, remote control, GPS system control, WiFi.

** More than 2 Years warranty on customers demand.

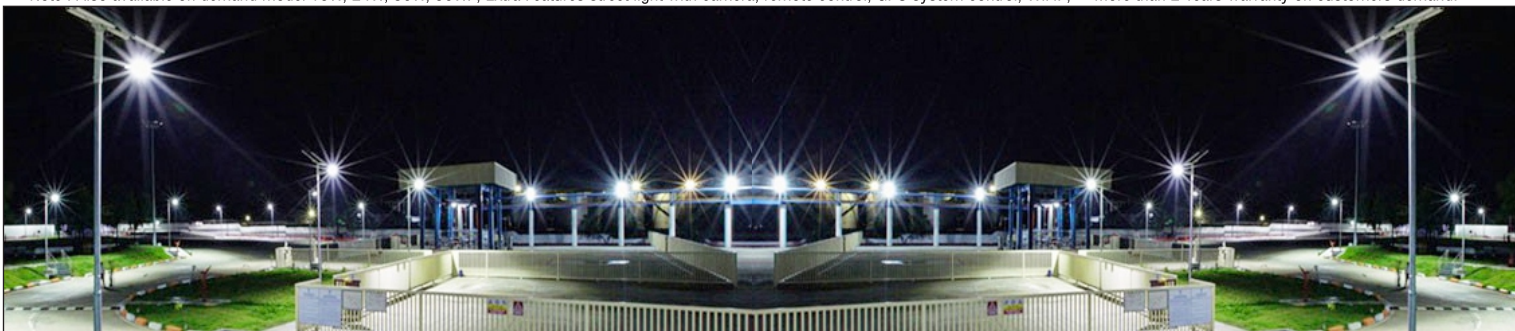
Integrated Solar Street Light System (All in One)



Technical Specifications : All in One Solar Street Light System

Description		9W LED	12W LED	15W LED
Solar Module		40Wp Solar Panel Polycrystalline/Monocrystalline		
LED Light		9W LED	12W LED	15W LED
Battery Capacity		12.8V 11AH LiPo4 / Lithium-ion Battery		12.8V 15AH LiPo4 / Lithium-ion Battery
Motion Sensor		PIR Motion Sensor(10m Range)		
Lumen Output \Watt		120 Lumen / W		
Operation		Light will glow in full bright mode for first 4 hours, After 4 hours, Light will Dim to 33% Power and motion sensor will activate for detection of motion. If a human motion is detected in 10M area around the light, It will glow in full mode for 2 minutes, After that it will again come to 33% power.		
LED Driver Efficiency	LED Light Operating Voltage Range	Load Cutt-Off Voltage for Battery Deep Discharge Protection		Space Between pole to pole
>93.5%	11-16V	11.2 volt ±1		10mtr to 15mtr
Pole G.I. Galvanized (5m + 1m)	Light Backup Time Full Night	Net Weight 13Kg Approx		Product Dimension (L x W x H) 770 x 580 x 145 (mm)
Over Charge Protection	Deep discharge protection / Battery reverse Protection	load open & short protection		Indication on Charging
Provided	Provided	Provided		Green LED Glow
Indication on Battery Low Red LED Glow	Indication on Higher Cutt Off Green LED Blinking	Reverse Current Flow protection Provided		Temperature Compensation Provided
Packaging Contents Integrated light with SPV, Mounting bracket,U-clamp, Nut-bolt		Product Warranty 2 Years Warranty complete System (Battery warranty 1 Year / **)		

Note : Also available on demand model 18W, 24W, 36W, 56W. , Extra Features street light with camera, remote control, GPS system control, WiFi. , ** More than 2 Years warranty on customers demand.



* Pic & Spec can be changed without prior notice.

1. CONSULATION

- Site Survey & Facility Assessment
- Solution Assessment
- Discussions

2. DESIGN

- Project Planing
- Chamber Configuration Analysis
- System Requirement
- Block Diagrams
- Power & Error Budget
- Mechanical & RF Simulation

6. SUPPORT

- Remote & On-site Technical Support
- Periodic Calibration
- Refurbishment & Upgrades

5. INSTALLATION

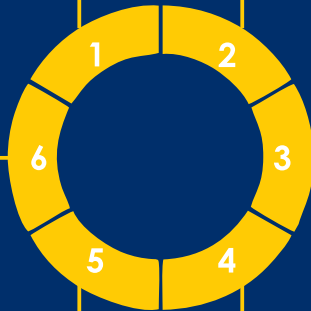
- Testing
- Calibration & Certification
- Equipment Installations

3. PRODUCTION

- Production Planing
- Quality Control through dedicated procedures

4. INTEGRATION

- Interface Development
- Integration testing





SHRI RADHE MOHAN POWER SOLUTIONS

- 📍 Ground Floor, Double Story, Khasra No-656, Sihani, Near Jagannath, Hospital, Meerut Road, Ghaziabad Uttar Pradesh - 201003
- ☎ +91- 80766 49869
- ✉ vaishnavimathur593@gmail.com

